

FEATURES

- ✧ High responsivity for dual windows at 1310 nm and 1550 nm
- ✧ Low dark current
- ✧ Quick pulse response
- ✧ Hermetically sealed 3-pin metal case
- ✧ Active diameter 300 μm

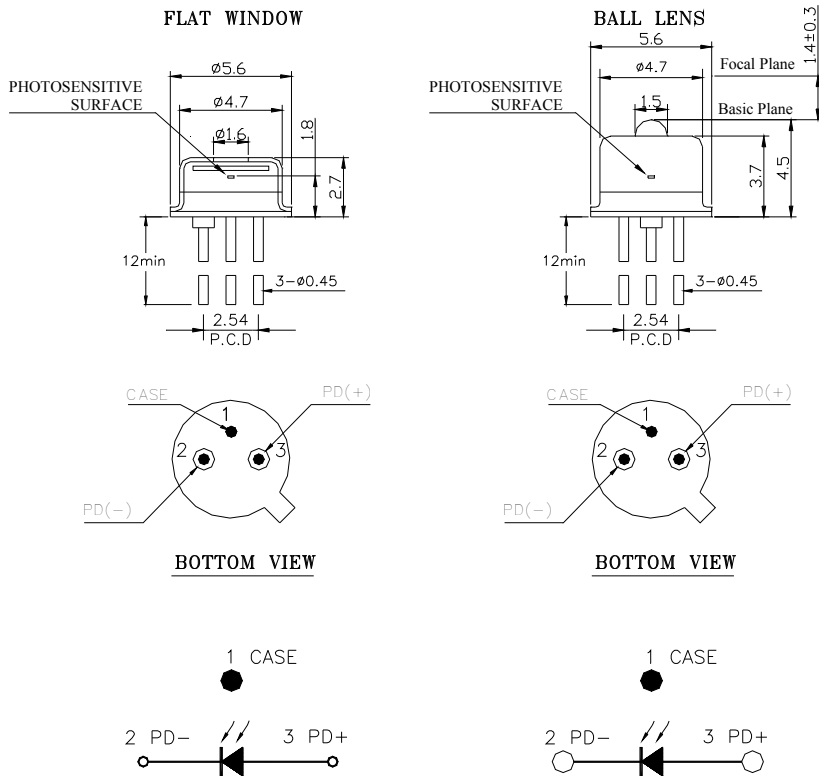
DESCRIPTION

PD-1110 series InGaAs Photodiode are suited to receive the light at the wavelength range from 1100 nm to 1620 nm. With high reliability, PD-1110 series are the best choice for telecom and datacom application.

ELECTRICAL AND OPTICAL CHARACTERISTICS (T_c=25°C)						
Symbol	Parameter	Test Conditions	Min.	Typ.	Max.	Unit
	Active Area			300		μm
	Detection Range		1100		1620	nm
R	Responsivity	V _R =5V, λ =1300nm	0.85		-	A/W
		V _R =5V, λ =1550nm	0.90	-		
I _{dark}	Dark Current	V _R =5V		2	5	nA
C	Capacitance	V _R =5V		6	10	pF
T _r /T _f	Rise/Fall Time	V _R =5V, 10~90%			2	ns
BW	Bandwidth	V _R =5V	500			MHz

ABSOLUTE MAXIMUM RATINGS (T_c=25 °C)			
Symbol	Parameter	Ratings	Unit
P _o	Input Optical Power	10	mW
V _{RD}	Reverse Voltage	20	V
I _{FD}	Forward Current	10	mA
T _{opr}	Operating Temperature	-40~+85	°C
T _{stg}	Storage Temperature	-40~+85	°C

MECHANICAL DIMENSION (mm) and PIN ASSIGNMENT



- Note:**
1. Specifications subject to change without notice.
 2. Other PIN assignment is available upon request.

ORDER INFORMATION

Part No.: P D - 1 1 1 -

Code	Package
0	Ball Lens Cap
5	Flat Window Cap

Code	Package
Blank	Flat Window Cap
N	Ball Lens Cap

Revision History

Version	Subject	Release Date
1.0	Initial datasheet	2002/6/1
2.0	Revise mechanical drawing	2009/4/9